

IN FOCUS: PRECARIETY
11TH JUNE 2022

CITY OF ROTTERDAM
+ HET NIEUWE INSTITUUT

THE MOC VOC AROUND

WELCOME

Welcome to *The World Around In Focus: Precarity*.

We believe that the voices, ideas and positions of architects, designers and cultural agents have never been more important. In a time of uncertainty and entanglement, we understand the importance of collaboration, and how meaningful it can be to create a space to share knowledge and champion best practices. The World Around is therefore thrilled to collaborate with Het Nieuwe Instituut to bring our public programming live in Rotterdam.

The *In Focus* series is a counterpoint to the annual The World Around Summit in New York City. While the summit provides a fast-paced overview of architecture's now, near, and next in a day, *In Focus* is a deeper delve into specific topics to gain a better understanding of how they shape, or can be shaped by, the work of architects and designers.

For *In Focus: Precarity* we're asking what design and architecture's role could be as crises mount, collide and burden communities, ecologies, economies and global supply chains. Participants from across Europe, Ukraine, Philippines, Kenya, Chile, Australia, Palestine and Taiwan will share inspiring work that provides actionable solutions and proven strategies for positive change in some contexts, and also work that creates resilience and mitigates against further damage in others.

We would like to thank everyone at The World Around and Het Nieuwe Instituut for making this collaborative event possible. The World Around is very grateful to Diego Marroquin, founder and board chair and Satomi Blair, executive producer. Het Nieuwe Instituut thanks Flora van Gaalen; Head of Programme, Tijn van de Wijdeven; Programme Manager and Reineke Otten; Producer.

The World Around is grateful to its board of directors Vishaan Chakrabarti, Elizabeth Diller, Adam Flatto, Dean Harriet Harriss, Peter Dillon and Tina Vaz, and thanks its global partners, Meta Open Arts and Amura. Het Nieuwe Instituut also thanks Gemeente Rotterdam and Rotterdam Partners for their support. We hope you enjoy the day!

Beatrice Galilee
Executive Director
The World Around
theworldaround.com
[@theworldaround](https://twitter.com/theworldaround)

Aric Chen
General and Artistic Director
Het Nieuwe Instituut
hetnieuweinstituut.nl
[@nieuweinstituut](https://twitter.com/nieuweinstituut)

SCHEDULE

THE WORLD AROUND WILL MAKE ALL PRESENTATIONS AVAILABLE
ONLINE AT THEWORLDAROUND.COM
FOLLOW US @THEWORLDAROUND #THEWORLDAROUND

11:00

SESSION ONE

MANY HANDS

ARIC CHEN, HET NIEUWE INSTITUUT
BEATRICE GALILEE, THE WORLD AROUND

1 AAU ANASTAS

2 ASSEMBLE

3 ANUPAMA KUNDOO

4 ALFRED MARASIGAN

5 AFARAI

6 KARRABING FILM COLLECTIVE

TOWNHALL Q&A:

MARIA LISOGORSKAYA, ELIAS & YOUSEF
ANASTAS, AFAINA DE JONG

13:00

LUNCH BREAK

14:00

SESSION TWO

MANY CYCLES

INTRODUCTION BY FLORA VAN GAALEN
HET NIEUWE INSTITUUT

1 ECOCITEX

2 ROTOR

3 BANGKOK PROJECT STUDIO

4 BUILD X

5 PHILIPPE RAHM

6 LINA GHOTMEH

15:30

COFFEE BREAK

16:00

SESSION THREE:

MANY TRANSFORMATIONS

INTRODUCTION BY
BEATRICE GALILEE, THE WORLD AROUND

1 RESTART UKRAINE + Q&A

2 MANUEL HERZ

3 DESIGN FOR PEOPLE

4 MASS DESIGN GROUP

TOWNHALL Q&A:

LINA GHOTMEH, ALEXANDER SHEVCHENKO,
MANUEL HERZ, MEGAN SUAU

CLOSING REMARKS

NOW
NEAR
NEXT
NOW
NEAR
NEXT
NOW

NOW
NEAR
NEXT
NOW
NEAR
NEXT
NOW

SESSION ONE MANY HANDS

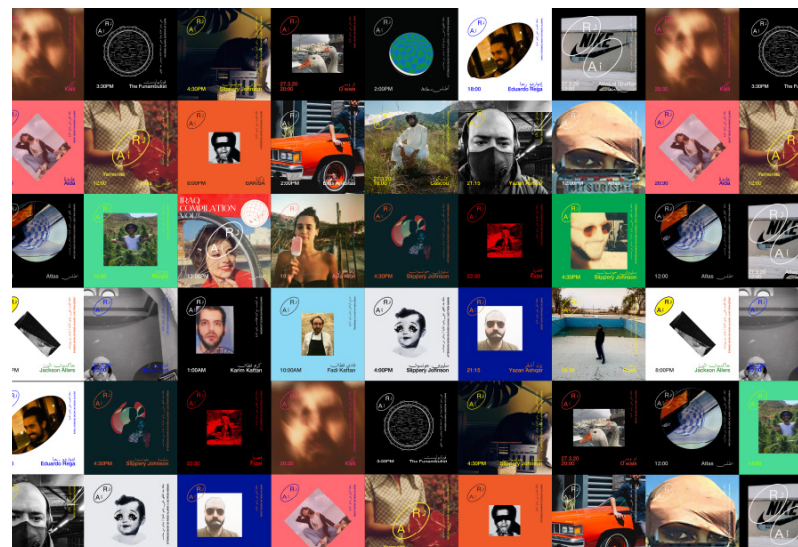
In the first session of our day-long event, we present designers, artists and architects who create change by finding inventive ways to collaborate, connect and amplify the needs and hopes of their communities. From the use of film and art to broadcast issues of Indigenous lands in Australia, to providing a platform for new voices and creating material collaborations in Europe to inventing a radio station and network across Palestine, this session explores the ways in which designers who share resources and pool talent can provide a platform for others at a local and global level. In all cases, the collective voice speaks louder when advocating for change, telling important stories, or representing marginalized or displaced groups. Our speakers will address how architecture, design, film and other media can help to strengthen communities in times of hardship, reunite people and places divided by conflict, and offer practical solutions to those most in need.

AAU ANASTAS ELIAS AND YOUSEF ANASTAS



The pluralistic Palestine-based studio AAU Anastas have multiple ongoing initiatives that all share a through-line in experimentation, process and community. The team of brothers founded Local Industries in 2012, as a community of bold artisans and designers dedicated to industrial furniture-making, and SCALES in 2016, as a research department that is constantly enhanced by linking scales that are usually opposed.

Their most recent works include All Purpose, an installation for the 17th Venice Architecture Biennale; the Hebron courthouse project; and Stone Matters – a research experiment into the possibilities of using stone in Palestine's contemporary architecture. Elias and Yousef also co-founded Radio alHara – a dynamic community-based online radio station incorporating critical conversations and music from Bethlehem, Ramallah and Amman that they broadcast during quarantine.



[@aauanastas](https://www.instagram.com/aauanastas)
[aauanastas.com](https://www.aauanastas.com)

ASSEMBLE

MARIA LISOGORSKAYA



A multi-disciplinary collective working across architecture, design and art. Founded in 2010 to undertake a single self-built project, Assemble has since delivered a diverse and award-winning body of work, whilst retaining a democratic and co-operative working method that enables built, social and research-based work at a variety of scales, both making things and making things happen. As a founding director of this architecture, art and design collective, Maria's projects range from the scales of product and material prototyping, to architectural design and organizational strategy. She is currently working with Material Institute in New Orleans, developing the arts curriculum and new alternative education campus; and is one of the leading designers delivering new spaces for the Luma Atelier, regional material r&d innovation labs in Arles, France. Maria was the Assemble Visiting Professor of Architecture in EPFL Switzerland 2020-2021, and has previously taught Masters of Architecture at the Vienna TU and Central Saint Martins in London. Assemble has just been elected to the Royal Academy.



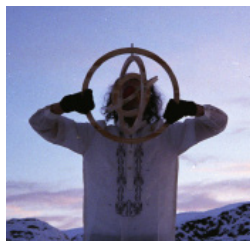
ANUPAMA KUNDOD



Treating architecture as the stage on which human stories live out, Indian architect Anupama Kundoo's work begins with and remains close to the deep human need to have purpose, refuge, and social engagement. It speaks through details; details that foster intimacy and variety, sensory and spatial. It is where makers engage with hand and mind to produce objects they are proud of, where they transform simple materials with care and intelligence into purposeful structures, where they are challenged to do more with less, and where they routinely exceed all expectations including their own. Her work is about the innovation and socio-economic abundance that results from research and investment in materials and building techniques. The act of building produces knowledge just as much as the resulting knowledge produces buildings. Each lesson learned and each incremental improvement drives micro-decisions that, over time, produce the disproportionate and cumulative increases that we call abundance.



ALFRED MARASIGAN



Heavily inspired by emotional geography, slow TV and magical realism, Alfred Marasigan conducts serendipitous research and transmedial practices often via live streaming. Such formats anchor his current explorations on simultaneity, sustainability, solidarity and sexuality.

Marasigan graduated in 2019 with an MA in Contemporary Art from the UiT Arctic University of Norway's Kunstakademiet i Tromsø and is a Norwegian Council of the Arts Grantee for Newly Graduated Artists. He currently lives in Manila and has been a faculty member of Ateneo de Manila University's Department of Fine Arts since 2013.



AFARAI AFAINA DE JONG



Encouraging change on social and spatial issues to accommodate differences. Architect Afaina de Jong leads AFARAI, an Amsterdam-based architectural agency that specializes in spatial design and strategy. The studio's aim is to cross the boundaries of the traditional architecture practice by dealing with the existing

city using an intersectional and interdisciplinary approach, integrating theory and research with design. Afaina works on the boundary of architecture and art, and her work is deeply connected to representing people and cultural movements that are not traditionally represented in architectural form. By using form languages, colors, patterns and narratives that are other, she works towards a more inclusive experience of space. De Jong is a contemporary thinker, keeping a pulse on the now while at the same time projecting a unique vision of the future. For her, it is important that architecture is not only perceived, but also experienced and interacted with. Her discourse is international and intersectional, connecting counterculture with architecture.



KARRABING FILM COLLECTIVE

Exploring the cultural and environmental effects of settler colonialism from an Aboriginal perspective. The Karrabing Film Collective uses the creation of film and art installations as a form of Indigenous grassroots resistance and self-organization. The collective opens a space beyond binaries of the fictional and the documentary, the past and the present. Meaning “low tide” in the Emmiyengal language, karrabing refers to a form of collectivity outside of government-imposed strictures of clanship or land ownership. Shot on handheld cameras and phones, most of Karrabing’s films dramatize and satirize the daily scenarios and obstacles that collective members face in their various interactions with corporate and state entities.



SESSION TWO MANY CYCLES

Arguably the most universal precarity of our time is the climate emergency. The world’s gravest problem intersects natural, environmental disasters with economic and civic unrest, political and social justice, and a global energy crisis. Therefore, addressing it requires innovative thinking and interdisciplinary approaches. The designers and architects in this session share a profound understanding of, and respect for, the relationship the building industry has to land, nature and the environment – often showing that a total reframing of the question of building, making and producing itself is required.

Moving towards circular production chains, non-extractive and equitable construction practices are amongst the ways that design can contribute to mitigating the damage to our planet. Our speakers offer examples of how materials and the systems that create them can produce impactful art and architecture that improves its environment and benefits its users—human and non-human—rather than causing more harm.

ECOCITEX

ROSARIO HEVIA



Substantially reducing textile waste through social and environmental change. Ecocitex is a social enterprise that sells 100% recycled textile products through more than 250 women-led businesses across Chile. Founded by Rosario Hevia in 2019, the organization oversees an extensive production chain that involves anyone with access to clothing in the circular economy. Textile waste is responsible for 10% of global greenhouse gas emissions in addition to releasing half a million tons of microfibres into the ocean every year (European Parliament, 2021). So the team has created the only 100% recycled yarn in the world, from post-consumer clothing collected and recycled in Chile, without using water or dyes. Ecocitex's recycling process therefore aims to extend textile lifetimes to reduce global greenhouse gas emissions.



ROTOR

MAARTEN GIELEN



A cooperative design practice investigating the organization of the material environment. Rotor develops critical positions through research and design. Besides projects in architecture and interior design, it also produces exhibitions, books, economic models and policy proposals. In 2016, the group launched Rotor DC – a cooperative that organizes the reuse of construction materials; dismantling, processing and trading salvaged building components. Based in Brussels, the group attempts to be as generous with this city as it is with them. They seek to collaborate with contractors, nonprofits and other companies, and to become a central part of a regional ecosystem for large-scale reuse of building materials.

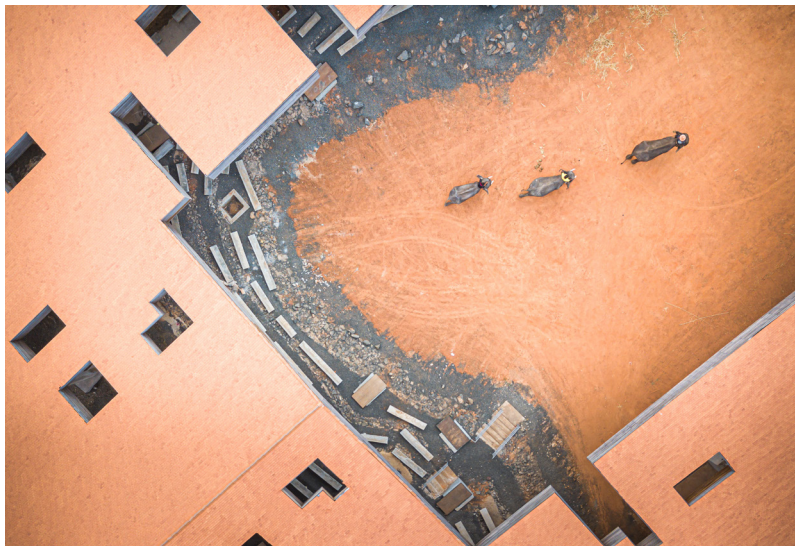


BANGKOK PROJECT STUDIO

BOONSERM PREMTHADA



Pushing towards a non-human-centered architecture. Thai architect and artist Boonserm Premthada, founder of Bangkok Project Studio, believes that architecture is the physical creation of an atmosphere that serves to heighten man's awareness of his natural surroundings. His work isn't about designing buildings, but rather the manipulation of light, shadow, wind, sound, and smell... creating a "poetics in architecture" that is a living sense. Beyond the realms of theory and practice, Boonserm's work also carries a strong socio-economic and cultural agenda as many of his projects have social programs that aim to improve the lives of the underprivileged. The Kantana Film and Animation Institute is a prime example of his theoretical and real-world ideals, while his notable projects include the Kantana Institute in Nakhon Pathom, Wine Ayutthaya, and Elephant World – all in Thailand.



BUILD X STUDIO

ETTA MADETE MUKUBA



Building communities and neighborhoods that foster health and well-being. Etta Madete Mukuba is a human-centered design architect, believing that communities must be at the heart of building and design. She chose architecture school because she saw the field as both physical and tangible, that would allow her to come up with practical solutions. She's passionate about sustainable building technology and materials in the built environment. Etta seeks to create social change through design and addresses development through an architectural lens. In her role at BuildX Studio, she's currently working on creating sustainable, low-income housing developments in Nairobi that supplement existing structures.



PHILIPPE RAHM



Extending the field of architecture from the physiological to the meteorological. Swiss architect Philippe Rahm runs his Paris-based studio based on a manifesto that looks “towards a meteorological architecture,” and asks: might not climate be a new architectural language, a language for architecture rethought with meteorology in mind? Might it be possible to imagine climatic phenomena such as convection, conduction or evaporation for example as new tools for architectural composition? Could vapor, heat or light become the new bricks of contemporary construction? Philippe's real-life explorations into applying this approach have resulted in projects like the Jade Eco Park in Taichung, Taiwan – a 70-hectare site where the climate is modulated in sections to create spaces that are less hot, less humid, and less polluted.



LINA GHOTMEH



Orchestrating an archeology of the future. Lina Ghotmeh is a humanist architect, born and raised in Beirut, and founder of a Paris-based practice of architects, researchers, designers and artists. Echoing her lived experience in Beirut, her office's work is orchestrated as an “Archeology of the Future”: every project emerges in complete symbiosis with nature after a thorough historical and materially sensitive approach. All of Lina's proposals are testimonies to the complex simplicity of her approach and sensitive twist on architecture – notably in projects like: Réalimenter Masséna or the highly praised tower Stone Garden delivered in Beirut.



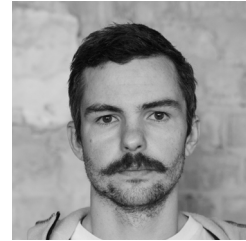
SESSION THREE

MANY TRANSFORMATIONS

Rebuilding after conflict or disaster is often the most visible sign of reparation, and conversely the lack of care in restoring affected communities can be a profoundly open wound. In that sense the responsibility of architects is paramount. In our final session, we invite a group of practitioners whose work after crisis and carefully considered construction and planning can mitigate such catastrophes from repeating, or at least lessen the devastation if they do. Taking responsibility for the impact of even the smallest intervention and using crises as opportunities to improve the precarious lives of those who inhabit it, our final speakers will present their work in regenerating and reshaping sites of precarity—both past and present.

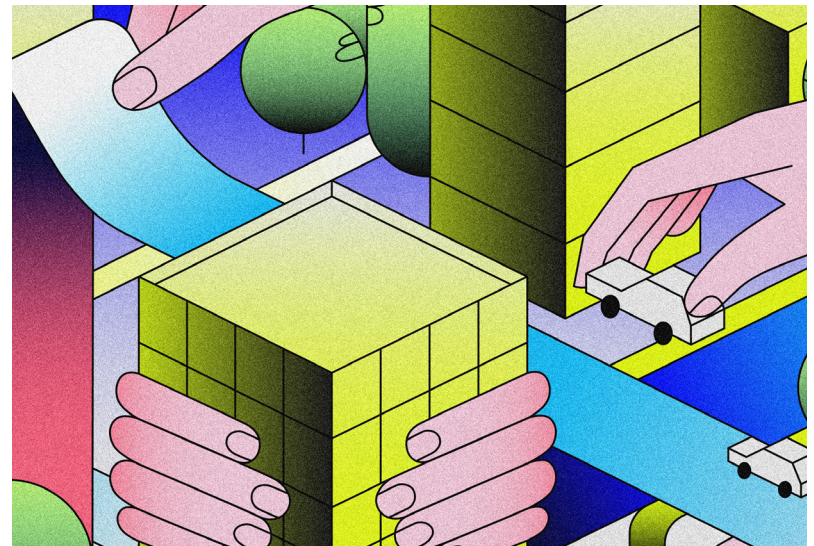
RESTART UKRAINE

ALEXANDER SHEVCHENKO



New Ukrainian cities and villages start here. Alexander Shevchenko, founder of Zvidsy Agency, began ReStart Ukraine in 2022 as both a project and an NGO in response to the Russian invasion and ongoing war in his home country. To offer hope and perspective, this open-source collective of researchers and practitioners

is beginning to explore and develop the best ways to restore afflicted urban and rural areas after destruction of such scale. Prior to ReStart Ukraine, Alexander worked and studied in Ukraine, Spain, Portugal, Italy, Germany, and Malaysia with various international stakeholders such as UN-Habitat (WUF 9), GIZ, USAID, UNDP. He has a multisectorial background in civil engineering, spatial planning, and urbanism.



MANUEL HERZ



Manuel Herz researches the architecture and urbanism of migration. His award-winning books “From Camp to City: Refugee Camps of the Western Sahara” and “African Modernism - Architecture of Independence” explore very different ideas about architecture on the African continent, but both relate in some way to the “power of a new beginning”. Based in Basel, Switzerland, Manuel Herz Architects is a practice embedded in research, but also builds across a very wide range of typologies, locations and scales, from the architectural to the urban and territorial. Completed projects include the Synagogue of Mainz, an apartment building with moving facades in Zurich, and a social housing project with a kindergarten in Lyon.



DESIGN FOR PEOPLE HSIEH YING-CHUN



Hsieh Ying-chun is an architect of post-disaster recovery.

In his award-winning work, the Taiwanese architect and builder has been helping people rebuild their communities, homes and lives since 1999, when he became internationally recognized for his work reconstructing remote rural villages in Taiwan after a devastating earthquake destroyed thousands of communities. Hsieh Ying-chun organized the reconstruction of housing and communities in disaster-struck areas while faced with two challenges: to build houses within an extremely tight budget, and to base the projects on the notion of sustainable construction, green building, cultural preservation and creation of local employment opportunities. In more recent years, he has continued to help people build their own houses, from the catastrophic earthquakes in Sichuan, China to the sufferers of the South East Asian Tsunami.



MASS DESIGN GROUP

MEGAN SUAU



A monument commemorating the black victims of lynching in the US. A healthcare and education campus in Rwanda. A memorial for the victims of gun violence. In each of its projects, non-profit institution MASS (Model of Architecture Serving

Society) researches, builds and advocates for architecture that promotes justice and human dignity. For In Focus: Precarity, MASS Design Group director Megan Suau will explain why the firm was founded on the understanding that architecture's influence reaches beyond individual buildings. The team believes that architecture has a critical role to play in supporting communities to confront history, shape new narratives, collectively heal and project new possibilities for the future.



IMAGE CREDITS

PHOTO & IMAGE CREDITS

P9 Courtesy of AAU Anastas, Radio Alhara

Portrait of Elias & Yousef Anastas by Archie Thomas

P10 Courtesy of Assemble,
Photo of Maria Lisogorskaya Robot Pic by Maria Lisogorskaya

P11 Courtesy of Anupama Kundoo, Wall House by Javier Callejas

P12 Courtesy of artist Alfred Marasigan, The BAOANG Directory, 2021
Portrait of Alfred Marasigan by Lisa Robert

P13 Portrait of Afaina de Jong by LailaCohen

P14 Courtesy of Karrabing Film Collective

P16 Courtesy of Ecocitex

P17 Courtesy of ROTOR

P18 Courtesy of Bangkok Project Studio, Cultural Courtyard by Spaceshift Studio
Portrait of Boonserm Premthada by I Am Everything

P19 Courtesy of Etta Madete Mukuba and BuildX

P20 Courtesy of Philippe Rahm architects, Taichung Central Park
Portrait of Philippe Rahm by Philippe Rahm architects

P21 Courtesy of Lina Ghotmeh, Stone Garden by Laurian Ghinitoiu
Portrait of Lina Ghotmeh by Gilbert Hage

P23 Graphic courtesy of Natalia Shulga
Portrait of Alexander Shevchenko by Andrii Sydoruk

P24 Courtesy of Manuel Herz, Babyn Yar Synagogue by Iwan Baan
Portrait of Manuel Herz by Julien Lanoo

P25 Courtesy of Hsieh Ying-chun, Yangliu Village by Nie Chen
Portrait of Hsieh Ying-chun by Roan Ching-yueh

P26 Courtesy of MASS Design Group

ABOUT

ABOUT THE WORLD AROUND

The World Around is a non-profit platform and public charity based in New York founded by Diego Marroquin and Beatrice Galilee with the goal of enriching and empowering contemporary architectural discourse. Through a series of international events and broadcasts and its new mentor program Young Climate Prize, the platform seeks to connect and create a progressive, diverse and exciting global network of thinkers and makers today.

theworldaround.com | youngclimateprize.com

[@theworldaround.com](https://twitter.com/theworldaround)

ABOUT HET NIEUWE INSTITUUT

Het Nieuwe Instituut in Rotterdam is the Netherlands' national institute for architecture, design and digital culture. It houses The National Collection for Dutch Architecture and Urban Planning, one of the largest architecture collections in the world. Het Nieuwe Instituut has various exhibition spaces, a public Research Centre, a museum shop, a museum café, an auditorium, educational spaces and a garden. Het Nieuwe Instituut focuses on important social developments, such as the housing shortage, the energy transition, the rise of artificial intelligence, mobility, and the use of public space.

hetnieuweinstituut.nl

[@nieuweinstituut](https://twitter.com/nieuweinstituut)

WITH THANKS

THE WORLD AROUND GLOBAL PARTNERS



PRESENTED IN PARTNERSHIP WITH



MEDIA PARTNERS

VOLUME PIN-UP

SUPPORT OUR WORK

To find out how you could be part of The World Around or make a tax-deductible contribution to support our work please contact us: info@theworldaround.com or visit:

theworldaround.com/donate

THE WORLD AROUND

EXECUTIVE DIRECTOR
Beatrice Galilee

EXECUTIVE PRODUCER
Satomi Blair

EXTERNAL AFFAIRS
Dan Howarth

PRODUCTION ASSISTANT
Ana Minujin

INTERN
Lalia Saidy Khan

FILM PRODUCTION
CG Foisy, 4Hawk Productions
Satomi Blair, 4Hawk Productions
Ana Minujin

DESIGN
Susan Sellers, 2X4
Marcus Hollands, 2X4
Studio Bamba

HET NIEUWE INSTITUUT
Aric Chen
Tijn van de Wijdeven
Flora van Gaalen
Reineke Otten
Moritz Geremus
Merel Meijer
Najiba Yasmin
Bart Smits

THE WORLD AROUND BOARD OF DIRECTORS

Vishaan Chakrabarti, PAU
Elizabeth Diller, Diller Scofidio + Renfro
Adam Flatto, Georgetown Company
Beatrice Galilee, Executive Director
Dean Harriet Harriss, Pratt School of Architecture
Reynold Levy
Diego Marroquin, Founder
Tina Vaz